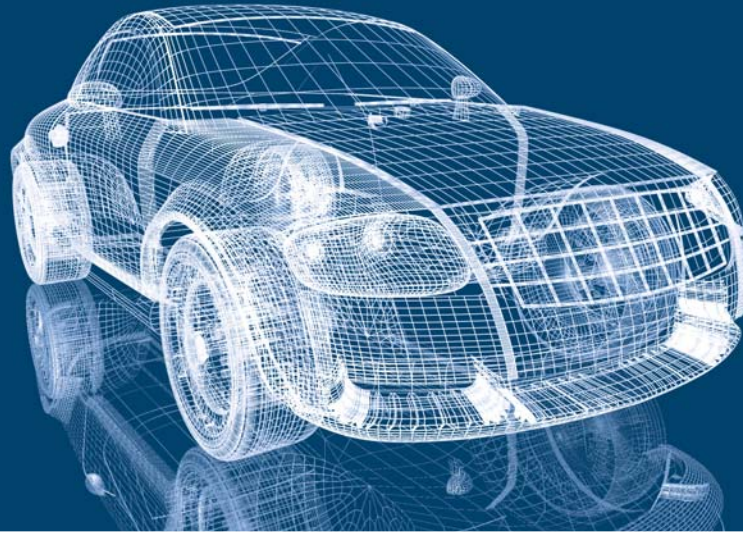


# VeLoDyn

Control and Calibration

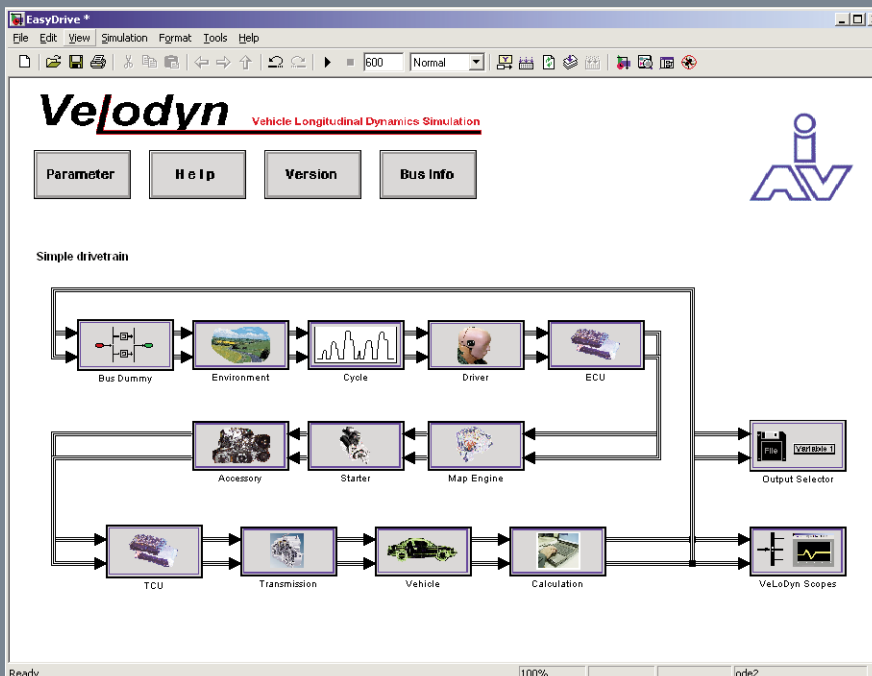


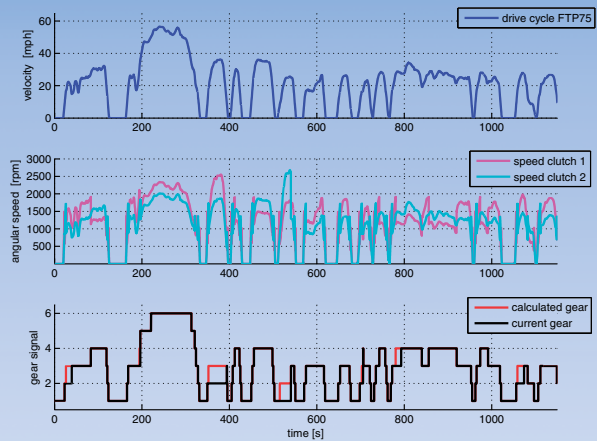
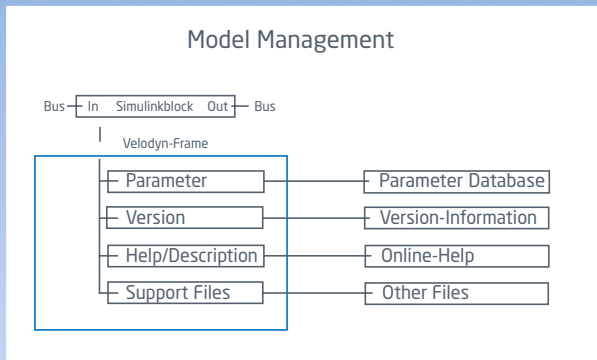
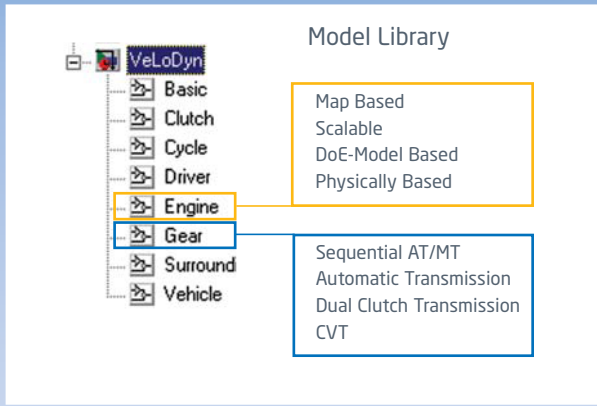
VeLoDyn (Vehicle Longitudinal Dynamics Simulation) is a tool for forward simulation of longitudinal vehicle dynamics with special consideration of the driveline. Due to the low sample rate (step sizes up to 200 ms) HiL-simulation, concept studies, and algorithm development are possible applications.

Based in MATLAB®/SIMULINK®, Velodyn provides a model library of all basic driveline components, in addition to model management functionality.

## VeLoDyn Applications:

- ▶ HiL/MiL/SiL-Simulation
- ▶ Concept Studies
- ▶ Algorithm Development
- ▶ Vehicle Concepts
- ▶ Function Tests
- ▶ Test Automation





## Model Library

The model library contains a large number of available models for an IC engine, clutch, transmission and the entire vehicle. The library can be arbitrarily extended.

## Model Management

Model management greatly simplifies version control and handling of sub-system models. The feature contains parameter and version information, automatically generated online help and additional files, e.g. DLLs, bitmaps. The databases are stored within the model file.

MATLAB®/Simulink® are registered trademarks of The MathWorks company.